

BEFORE GETTING STARTED/ USEFUL BRIEF MANUAL

This page is absolutely about getting some few points being indicated. Sometimes if we just decide to explore the world, we try the most to understand what seems appropriate to do as a responsible traveler.



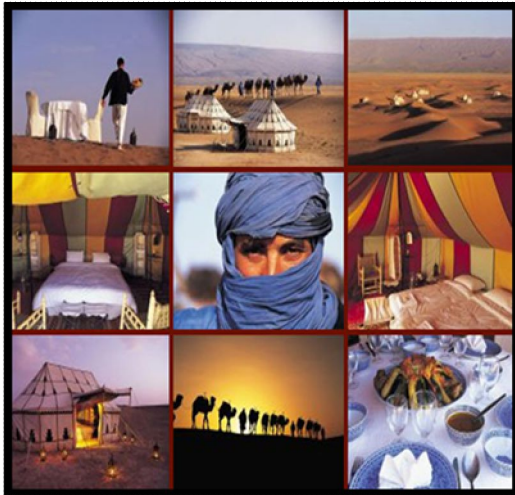
LIFE ON THE TREK

Most of our travels are entirely based on hiking for days at a time through vast expanses of wild (either in the mountains or the sahara desert). This practically sounds demanding, but the journey is made easy by our team of muleteers and porters. All you need to carry with you is a daysac, camera, waterbottle, fleece and waterproofs.



Early mornings and early nights are the one consistent feature on a trekking tour. We usually getting up early, pack and have a light breakfast before setting off. Trekking in the coolness of the morning before the the day starts to heat up too much. We break for lunch at midday and continue in the afternoon until we reach our night stop. Dinner is bought locally, so the choice of food is entirely dependent on the season. We will usually eat the traditional Berber style, for example Tagine stews and Couscous.





THE BERBERS AND THE BLUE MEN

You may have to notice that our tours, especially in the mountains, will bring us into close contact with the Berbers. Hospitality is what every Berber is known about as a traditional aspect. These friendly people will welcome us in their villages and will encourage you to mix as much as possible.

Getting to know their customs and traditions-speaking some of the words are what this experience is all about. We will be sitting overnight in some of the villages. As you might expect, facilities are basic but the overall experience is significantly magic.



IT'S THE PEOPLE

What makes an Intrepid Safari special is the people : the leader, the local crew, and of course our customers. No matter what the difference is between all of us, but we all have one thing in common : our passion for exploring the world and the wonderful diversity of its people.

In fact travelling with a small group of like minded people, strangers or not, is one of the biggest reasons that drives you coming back. The Intrepid Safari notion of flexibility gives you freedom to do your own things. As everyone is on that tour for the same reason, whatever walk of life you're in, friendships are made instantly, but sometimes last for years.